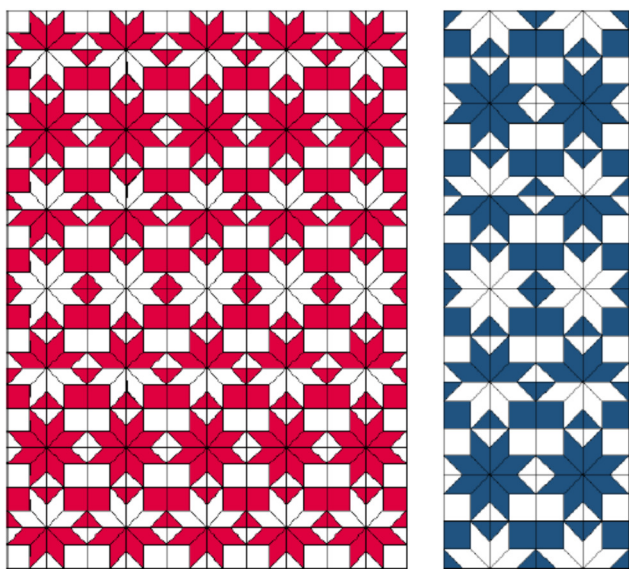


Sweetgrass Creative Designs

General Class Instructions

Eureka, Mt – August 2012

True North



You have the option of making a quilt or table runner. If you cut your strips ahead of time, you will only have to bring a small cutting mat (12' X 12' or 12" x 18" will be plenty. A 6"x 12" or 4" X 14" cutting ruler will be large enough for class work.

You will also need your sewing machine, basic sewing supplies, and thread to match either your light or dark fabric.

If you have any questions, you can email me at anne@sweetgrassdesigns.com

Monterey Bay

We will be making the table runner from this ensemble in class. If you cut your pieces ahead of time, you will probably complete the top in class, and you will only have to bring a small cutting mat (8" X 12" will be plenty).

A 6" X 12" or 4" X 14" cutting ruler will be large enough for your class work.

You will also need your sewing machine, basic sewing supplies, and thread to match fabric D.

If you have any questions, you can email me at anne@sweetgrassdesigns.com.

